

niblock homes

Priced At
\$750,000

SOLD: UNDER CONTRACT

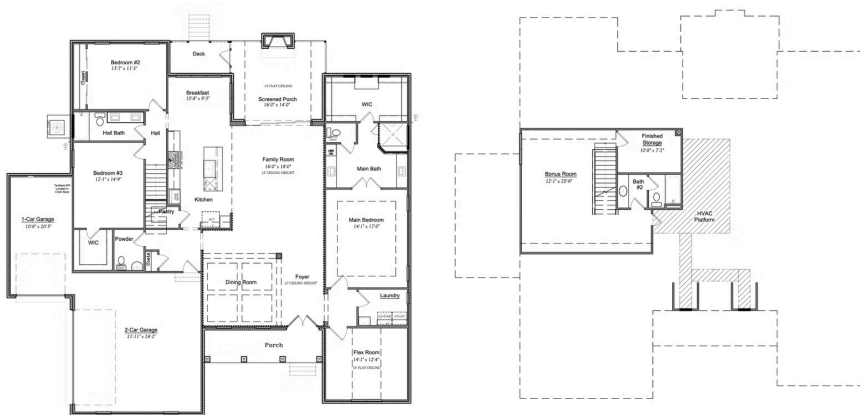


Custom Homes

3850 Willow Grove Ln #24

Concord, NC 28027

Promo Pricing of \$750,000 - this home must close on or before 12/31/25 to receive special price. Offering \$3,000 in closing costs with preferred lender. Discover the Morgan Plan in Maple Bluff. Tucked away on a serene 2.027-acre homesite in the picturesque Maple Bluff community, the Morgan Plan is a true gem. This stunning all-brick home offers thoughtful design and timeless charm, complete with an upstairs bonus room, full bath, and finished storage—perfect for added space and flexibility. The split-bedroom layout ensures privacy, with the main suite occupying its own wing and two secondary bedrooms located on the opposite side of the home. Soaring ceilings and an open-concept design connect the kitchen, family room, and breakfast area into one bright, inviting space ideal for everyday living or entertaining. At the front of the home, a formal dining room and a versatile flex room—perfect for a home office—offer added functionality. Elegant double front doors welcome you in, while a wall of four-panel sliding glass doors draws your eye straight to the spacious covered porch, blending indoor comfort with outdoor living. This home truly has something for everyone—style, space, and stunning views.



HOME FEATURES

Bedrooms: **3**

Bathrooms: **3.5**

Square Feet: **3,138**

www.niblockhomes.com

For more information
704-842-9448



Document generated 12/23/2025 Prices, floor plans, square footage, features, and materials are subject to change at any time and may vary by community. List prices are for informational purposes only, are not binding, and do not create any contractual obligation(s). Home renderings are artistic representations and may not depict exact colors, materials, or features.

