

niblock homes

Priced At
\$1,071,100

UNDER CONSTRUCTION



Saddlehorn

125 Crestview Lane Lot 14

Troutman, NC 28166

Introducing the Paxton - a spacious two-story home designed with both functionality and flexibility in mind. The main level features a private primary suite with dual vanities, a large soaking tub, and a walk-in shower—offering a true retreat at the end of the day. A flexible front room and a secondary bedroom add even more livability. A main-floor powder room is perfectly positioned for guests. Upstairs, you'll find a generous bonus space, two additional bedrooms, a full bath, and a second powder bath—ideal for entertaining, everyday routines, or weekend guests. You won't want to miss the large screened porch with floor to ceiling fauxstone fireplace. This is the perfect space for both entertaining and unwinding after a long day! This home is nestled inside Niblock's latest luxury community. Saddlehorn is conveniently located 10 minutes from I-77, near both Charlotte and Mooresville. Lake life is just around the corner, with boat storage and access to Lake Norman less than a mile away, making it easy to enjoy weekends on the water. Indulge in the expansive private homesites that offer both serenity and space, making this the perfect place to call home!

HOME FEATURES

Floor Plan: **Paxton**

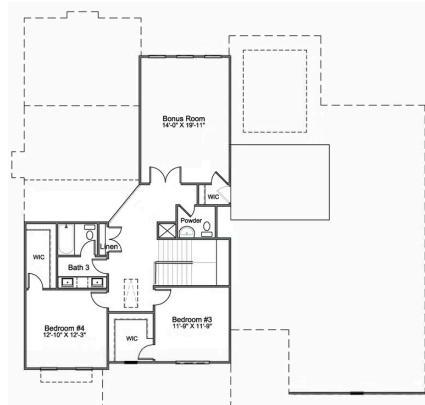
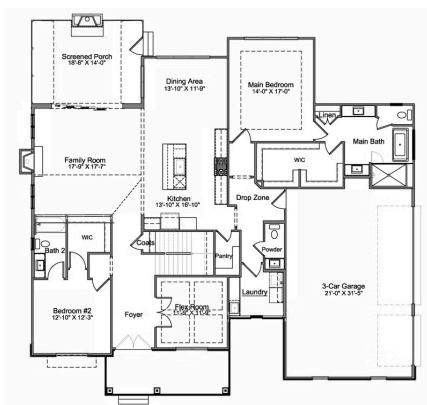
Bedrooms: **4**

Bathrooms: **4.0**

Square Feet: **3,426**

www.niblockhomes.com

For more information
704-842-9448



Document generated 08/2/2025 Prices, floor plans, square footage, features, and materials are subject to change at any time and may vary by community. List prices are for informational purposes only, are not binding, and do not create any contractual obligation(s). Home renderings are artistic representations and may not depict exact colors, materials, or features.

