

# niblock homes

MOVE-IN READY

Priced At  
**\$999,900**



## Saddlehorn

**133 Crestview Ln Lot 15**

Troutman, NC 28166

Welcome to the Hartford. This expansive 4-bedroom, 4-bath home combines impressive architecture with everyday functionality. A soaring two-story family room creates a dramatic focal point, filling the main living space with natural light and an open, airy feel. The private main-floor suite offers a peaceful escape with generous space and a bathroom showcasing a freestanding tub and a shower. Upstairs, a large bonus room provides flexible space for a media room, playroom, or home office. With a 3-car garage, there's plenty of room for storage, hobbies, or extra vehicles—making this home as practical as it is stunning. This home is nestled inside Niblock's latest luxury community. Saddlehorn is conveniently located 10 minutes from I-77, near both Charlotte and Mooresville. Lake life is just around the corner, with boat storage and access to Lake Norman less than a mile away, making it easy to enjoy weekends on the water. Indulge in the expansive private homesites that offer both serenity and space, making this the perfect place to call home!

## HOME FEATURES

Floor Plan: **Hartford**

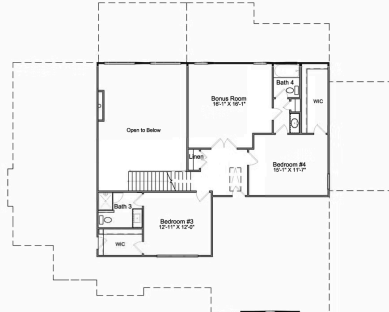
Bedrooms: **4**

Bathrooms: **4.0**

Square Feet: **3,304**

[www.niblockhomes.com](http://www.niblockhomes.com)

For more information  
**704-842-9448**



Document generated 04/26/2026 Prices, floor plans, square footage, features, and materials are subject to change at any time and may vary by community. List prices are for informational purposes only, are not binding, and do not create any contractual obligation(s). Home renderings are artistic representations and may not depict exact colors, materials, or features.

