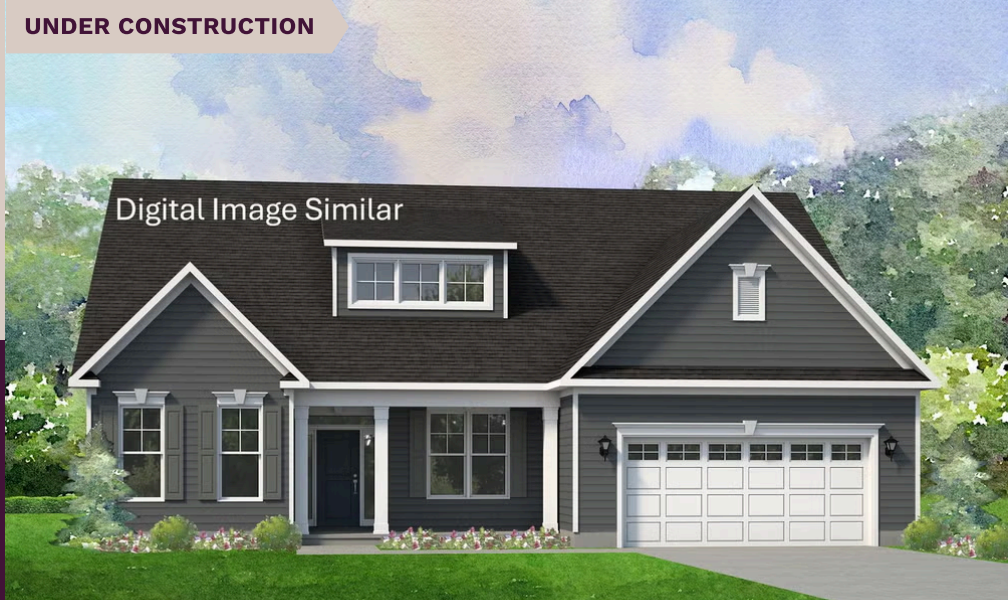


UNDER CONSTRUCTION

niblock homes

Priced at
\$696,800



Brighton Park

6914 Glen Abbey Lane

Homesite 32

Mount Pleasant, NC 28124

Welcome to the Harper, a thoughtfully crafted layout ideal for both empty nesters and growing families. Its open-concept design creates a warm, inviting space that's perfect for everyday living and effortless entertaining. The main level includes a spacious primary suite, a flexible room that can serve as a home office or formal dining area, and a secondary bedroom for guests or family. Upstairs, you'll find a private third bedroom and a generous bonus room—perfect for a media room, play space, or hobby retreat. This home features a reading nook off the bonus room, a 3-car garage, and a multi-slide door with screened porch! Tucked away in the welcoming Brighton Park community, this home is located in the heart of Mount Pleasant, NC. Once a quiet textile town, Mount Pleasant now shines as a vibrant small-town destination, rich with character and charm. From its bustling Historic District—home to unique shops, restaurants, a brewery, and a distillery—to its well-known antique markets that attract treasure hunters from all over, there's always something to explore.

HOME FEATURES

Floor Plan: **Harper**

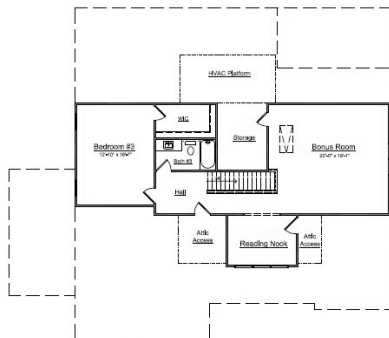
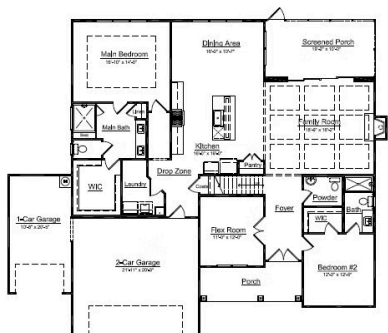
Bedrooms: **3**

Bathrooms: **3.5**

Square Feet: **2,987**

www.niblockhomes.com

For more information
704-842-9448



Document generated 07/1/2026 Prices, floor plans, square footage, features, and materials are subject to change at any time and may vary by community. List prices are for informational purposes only, are not binding, and do not create any contractual obligation(s). Home renderings are artistic representations and may not depict exact colors, materials, or features.

