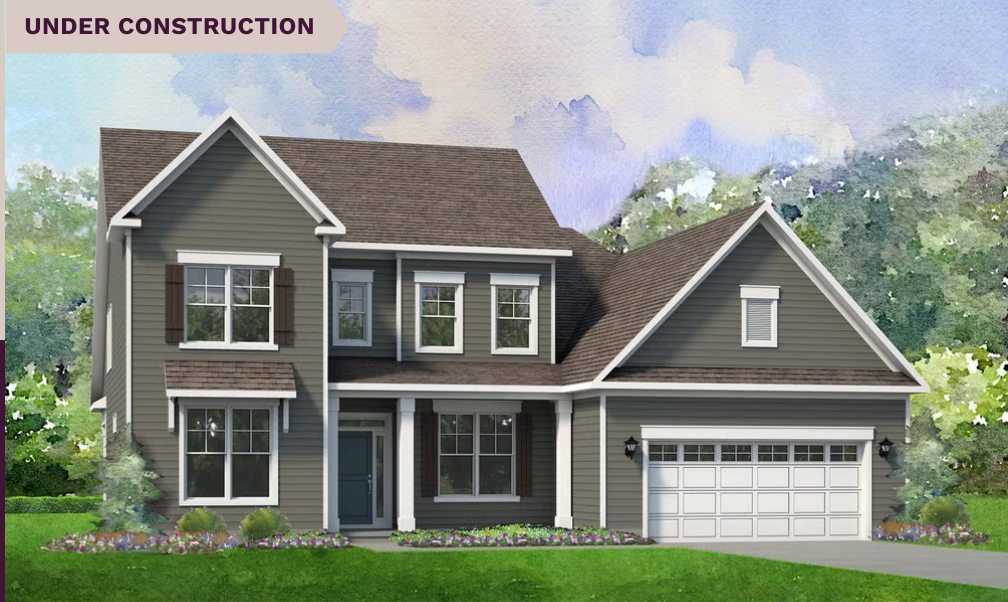


UNDER CONSTRUCTION

niblock homes

Priced At
\$694,000



Brighton Park

6823 Glen Abbey Lane Lot 3

Mount Pleasant, NC 28124

The Dawson blends smart design with everyday comfort in a way that feels instantly like home. With both the main suite and a guest room conveniently located on the first floor, it's designed for ease and flexibility. The spacious, open-concept kitchen and family room offer the perfect backdrop for everything from quiet evenings to lively gatherings. Need a home office, playroom, or formal dining area? The versatile flex room space adapts to your lifestyle. Upstairs you will find two additional bedrooms and bathrooms, along with a very spacious bonus room! This home features a multi-slide door in the family room that opens onto a screened porch. The perfect place to enjoy all seasons! You also won't want to miss the beautiful ceiling details in the family room and main bedroom. Tucked away in the welcoming Brighton Park community, this home is located in the heart of Mount Pleasant, NC. Once a quiet textile town, Mount Pleasant now shines as a vibrant small-town destination, rich with character and charm. From its bustling Historic District—home to unique shops, restaurants, a brewery, and a distillery—to its well-known antique markets that attract treasure hunters from all over, there's always something to explore.

HOME FEATURES

Floor Plan: **Dawson**

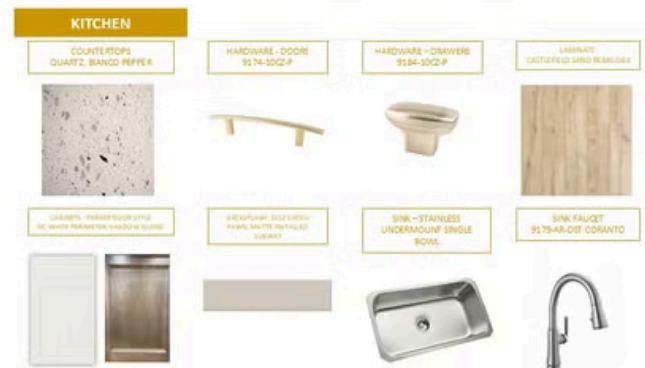
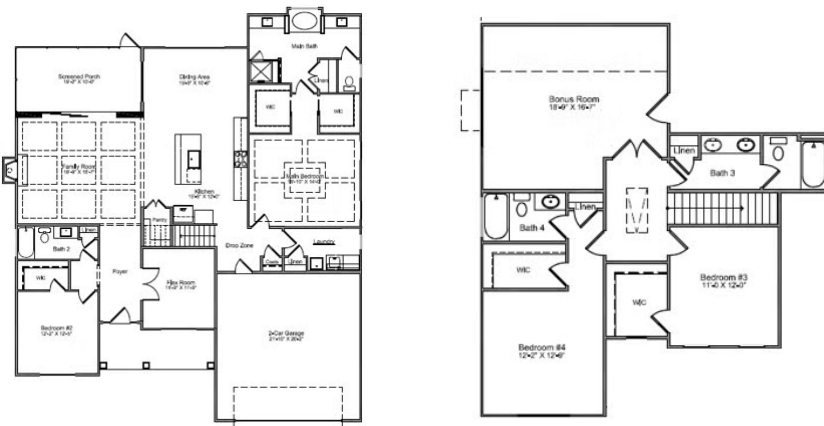
Bedrooms: **4**

Bathrooms: **4.0**

Square Feet: **3,095**

www.niblockhomes.com

For more information
704-842-9448



Document generated 04/26/2026 Prices, floor plans, square footage, features, and materials are subject to change at any time and may vary by community. List prices are for informational purposes only, are not binding, and do not create any contractual obligation(s). Home renderings are artistic representations and may not depict exact colors, materials, or features.

