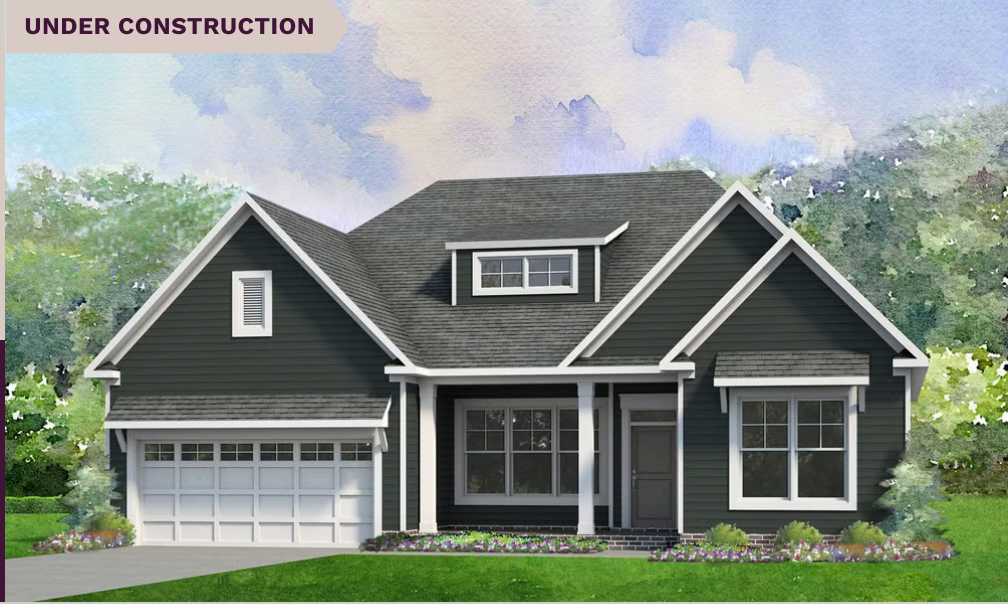


UNDER CONSTRUCTION

niblock homes

Priced At
\$599,900



Brighton Park

6932 Glen Abbey Lane

Mount Pleasant, NC 28124

Lot 35. Welcome to the Avalon - a beautifully designed three-bedroom ranch that blends comfort with functionality. Its open-concept layout connects the spacious family room and kitchen, making it easy to entertain or enjoy everyday moments together. The large main suite is tucked away from the two additional bedrooms, offering a private retreat with all the comforts you expect. A versatile flex room adds even more functionality—ideal for a formal dining space, home office, or cozy den. Whether you're an empty nester looking to simplify or a growing family needing smart space, the Avalon adapts to your lifestyle with ease. Tucked away in the welcoming Brighton Park community, this home is located in the heart of Mount Pleasant, NC. Once a quiet textile town, Mount Pleasant now shines as a vibrant small-town destination, rich with character and charm. From its bustling Historic District—home to unique shops, restaurants, a brewery, and a distillery—to its well-known antique markets that attract treasure hunters from all over, there's always something to explore.

HOME FEATURES

Floor Plan: **Avalon**

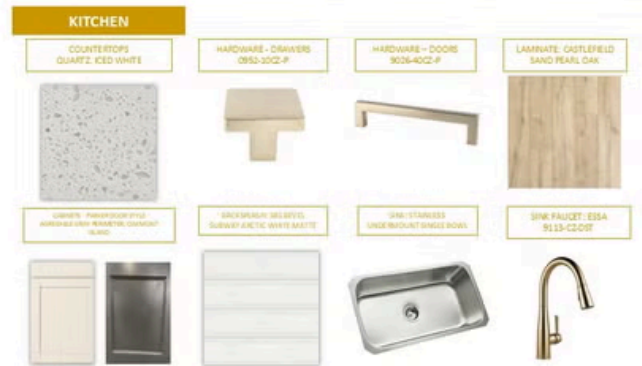
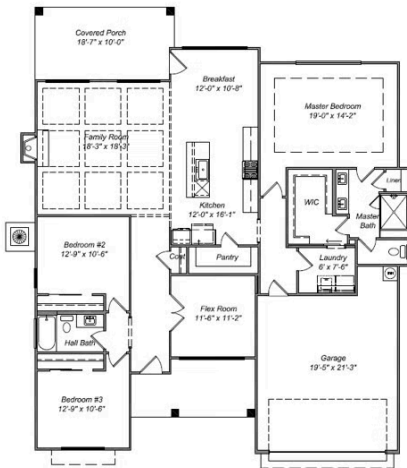
Bedrooms: **3**

Bathrooms: **2.0**

Square Feet: **2,059**

www.niblockhomes.com

For more information
704-842-9448



Document generated 05/26/2026 Prices, floor plans, square footage, features, and materials are subject to change at any time and may vary by community. List prices are for informational purposes only, are not binding, and do not create any contractual obligation(s). Home renderings are artistic representations and may not depict exact colors, materials, or features.

