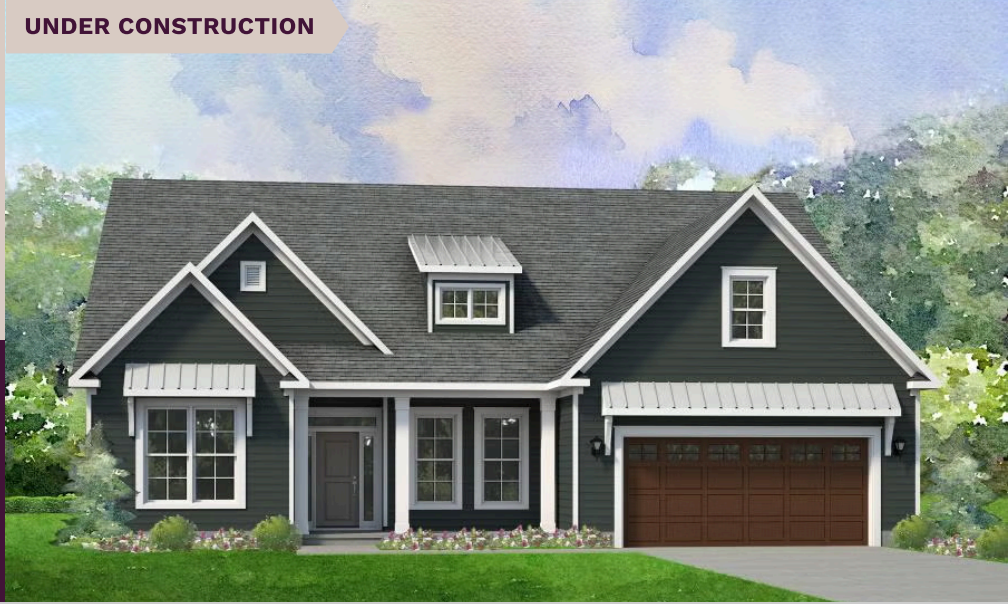


# niblock homes

Priced At  
**\$708,500**

UNDER CONSTRUCTION



## Adalyn Park

**138 Adalyn Ivy Lane Lot 8**

Mooresville, NC 28115

Welcome to the Harper, a thoughtfully crafted layout ideal for both empty nesters and growing families. Its open-concept design creates a warm, inviting space that's perfect for everyday living and effortless entertaining. The main level includes a spacious primary suite, a flexible room that can serve as a home office or formal dining area, and a secondary bedroom for guests or family. Upstairs, you'll find a private third bedroom and a generous bonus room—perfect for a media room, play space, or hobby retreat. Nestled in the highly sought-after Adalyn Park community, this home places you just minutes from downtown Mooresville and convenient access to I-77. It's easy to see why this area is becoming one of the Charlotte region's most desirable suburbs. Enjoy the charm of local shops and restaurants, along with the convenience of nearby national retailers—everything you need is right at your fingertips. Plus, you're just moments away from Iredell County's top-rated medical facilities. Families will appreciate being part of the Mooresville Graded School District, recognized as one of the top 10 school districts in North Carolina for K-12 academic achievement. Don't miss the chance to make this home yours! Don't wait—make this home yours now!

## HOME FEATURES

Floor Plan: **Harper**

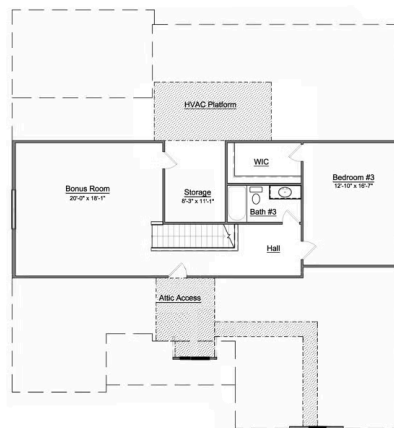
Bedrooms: **3**

Bathrooms: **3.0**

Square Feet: **2,883**

[www.niblockhomes.com](http://www.niblockhomes.com)

For more information  
**704-842-9448**



Document generated 12/24/2025 Prices, floor plans, square footage, features, and materials are subject to change at any time and may vary by community. List prices are for informational purposes only, are not binding, and do not create any contractual obligation(s). Home renderings are artistic representations and may not depict exact colors, materials, or features.

