

# niblock homes

Priced at  
\$728,800

UNDER CONSTRUCTION

Digital Image Similar



## Adalyn Park

167 Eve Ash Lane

Homesite 28

Mooresville, NC 28115

The Dawson blends smart design with everyday comfort in a way that feels instantly like home. With both the main suite and a guest room conveniently located on the first floor, it's designed for ease and flexibility. The spacious, open-concept kitchen and family room offer the perfect backdrop for everything from quiet evenings to lively gatherings. Need a home office, playroom, or formal dining area? The versatile flex room space adapts to your lifestyle. Upstairs you will find two additional bedrooms, a full bathroom, and a large bonus room, perfect for a media space or rec room. This home features a gourmet kitchen, coffered ceiling details in the flex room and family rooms, and a multi-slide door that opens onto a screened porch!

## HOME FEATURES

Floor Plan: **Dawson**

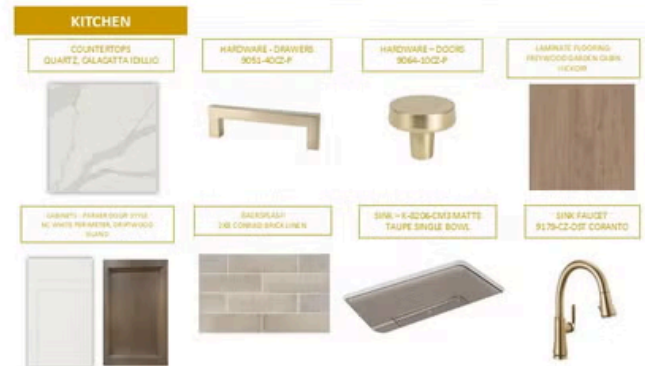
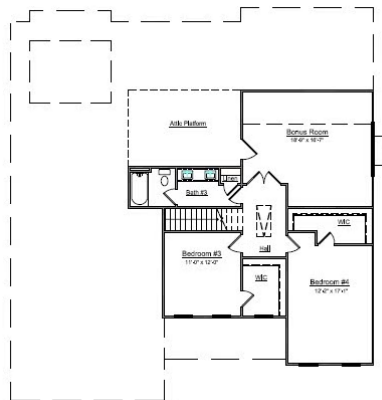
Bedrooms: **4**

Bathrooms: **3.0**

Square Feet: **3,042**

[www.niblockhomes.com](http://www.niblockhomes.com)

For more information  
704-842-9448



Document generated 07/1/2026 Prices, floor plans, square footage, features, and materials are subject to change at any time and may vary by community. List prices are for informational purposes only, are not binding, and do not create any contractual obligation(s). Home renderings are artistic representations and may not depict exact colors, materials, or features.

