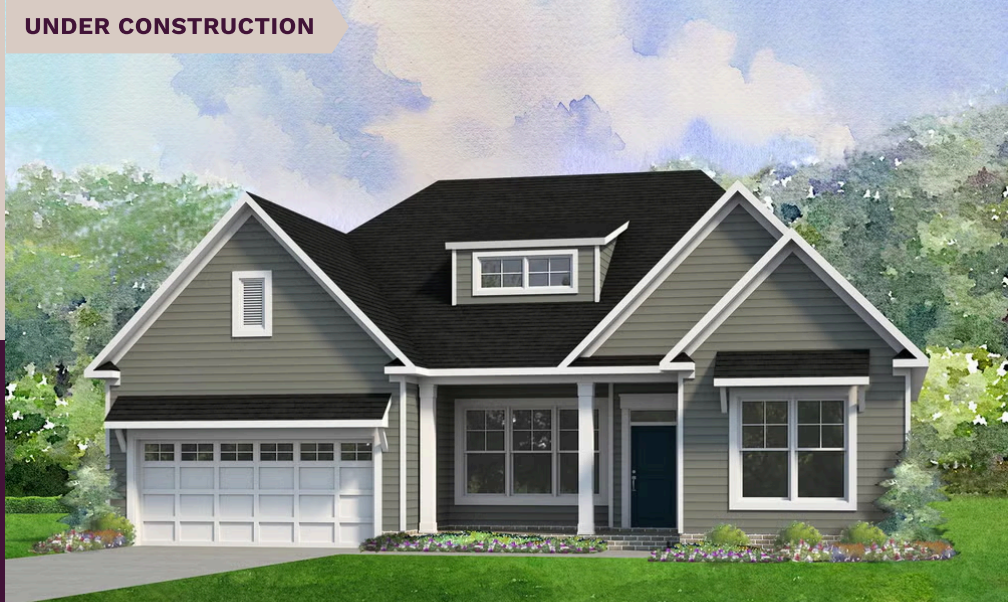


UNDER CONSTRUCTION

niblock homes

Priced At
\$671,000



Adalyn Park

152 Eve Ash Ln Lot 9

Mooresville, NC 28115

Welcome to the Avalon - a beautifully designed three-bedroom ranch that blends comfort with functionality. Its open-concept layout connects the spacious family room and kitchen, making it easy to entertain or enjoy everyday moments together. The large main suite is tucked away from the two additional bedrooms, offering a private retreat with all the comforts you expect. A versatile flex room adds even more functionality—ideal for a formal dining space, home office, or cozy den. Whether you're an empty nester looking to simplify or a growing family needing smart space, the Avalon adapts to your lifestyle with ease. Nestled in the highly sought-after Adalyn Park community, this home places you just minutes from downtown Mooresville and convenient access to I-77. It's easy to see why this area is becoming one of the Charlotte region's most desirable suburbs. Enjoy the charm of local shops and restaurants, along with the convenience of nearby national retailers—everything you need is right at your fingertips. Plus, you're just moments away from Iredell County's top-rated medical facilities. Families will appreciate being part of the Mooresville Graded School District, recognized as one of the top 10 school districts in North Carolina for K-12 academic achievement. Don't wait—make this home yours now!

HOME FEATURES

Floor Plan: **Avalon**

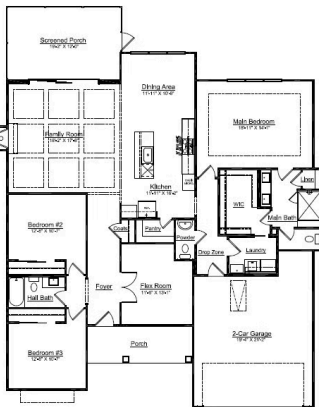
Bedrooms: **3**

Bathrooms: **2.5**

Square Feet: **2,084**

www.niblockhomes.com

For more information
704-842-9448



Document generated 04/26/2026 Prices, floor plans, square footage, features, and materials are subject to change at any time and may vary by community. List prices are for informational purposes only, are not binding, and do not create any contractual obligation(s). Home renderings are artistic representations and may not depict exact colors, materials, or features.

