

UNDER CONSTRUCTION

niblock homes



Priced At
\$712,714

Adalyn Park

177 Eve Ash Lane Lot 27

Mooresville, NC 28115

The Ashlyn awaits you at Adalyn Park. This is the ideal home for modern family living. The main-level primary suite offers a private retreat, complete with an elegant bath and a spacious walk-in closet. A convenient guest suite is also located on the main floor, perfect for visitors. The open-concept kitchen flows seamlessly into a large family room, creating an inviting space for everyday moments and special gatherings alike. Upstairs, you'll find two additional bedrooms and a versatile bonus room—perfect for a playroom or media space. Nestled in the highly sought-after Adalyn Park community, this home places you just minutes from downtown Mooresville and convenient access to I-77. It's easy to see why this area is becoming one of the Charlotte region's most desirable suburbs. Enjoy the charm of local shops and restaurants, along with the convenience of nearby national retailers—everything you need is right at your fingertips. Plus, you're just moments away from Iredell County's top-rated medical facilities. Families will appreciate being part of the Mooresville Graded School District, recognized as one of the top 10 school districts in North Carolina for K-12 academic achievement. Don't wait—make this home yours now!

HOME FEATURES

Floor Plan: **Ashlyn**

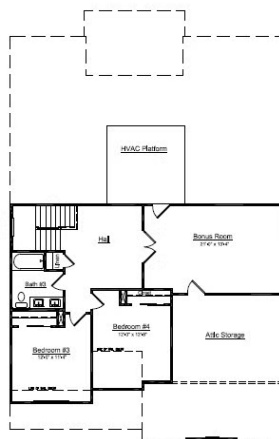
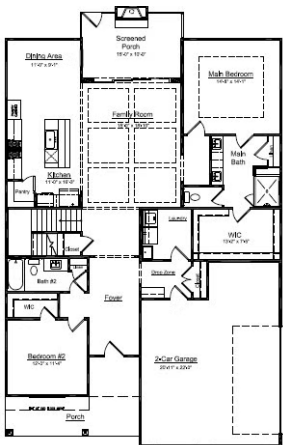
Bedrooms: **4**

Bathrooms: **3.0**

Square Feet: **2,748**

www.niblockhomes.com

For more information
704-842-9448



Document generated 04/19/2026 Prices, floor plans, square footage, features, and materials are subject to change at any time and may vary by community. List prices are for informational purposes only, are not binding, and do not create any contractual obligation(s). Home renderings are artistic representations and may not depict exact colors, materials, or features.

