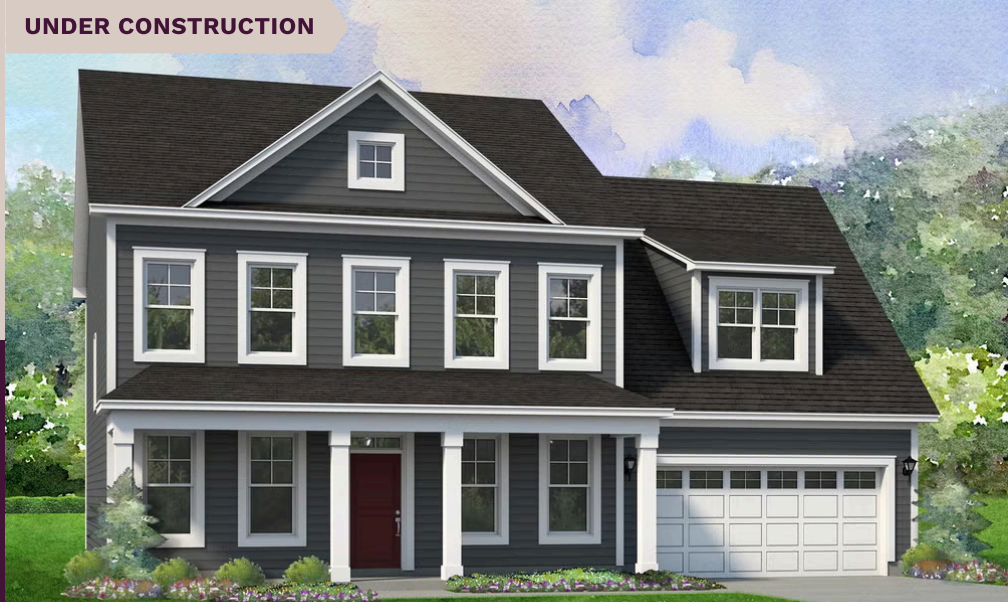


UNDER CONSTRUCTION

# niblock homes

## Priced At \$729,500



## Red Hill

### 2575 Cornelius Pl NW

Concord, NC 28027

Lot 82. The Hillcrest awaits you at Red Hill. This five-bedroom home features a breathtaking two-story family room that fills the heart of the home with natural light. A formal dining room, private guest suite, and a main-level primary suite—with a spacious bathroom and dual walk-in closets—add elegance and ease to your daily routine. Upstairs, you'll find three generously sized bedrooms, two full baths, and an oversized bonus room—perfect for a playroom, media space, or whatever your lifestyle requires. This home offers a unique opportunity to become part of the charming Red Hill community—one of Concord's hidden gems. Rich in character and history, this very property is where the home of Martin Pheifer once stood, a prominent local figure and close friend of George Washington. Along with its rich history, this neighborhood offers many "one-with-nature" amenities such as scenic walking trails, access to the Carolina Thread Trail, and peaceful park areas—perfect for enjoying the outdoors just steps from your front door. Just minutes from I-85, Highway 29, and George Liles Parkway, this community offers easy access to shopping, restaurants, and premier medical facilities. Residents will also enjoy Cabarrus County's excellent schools and lower taxes. Start your next chapter right here—your new home is waiting.

## HOME FEATURES

Floor Plan: **Hillcrest**

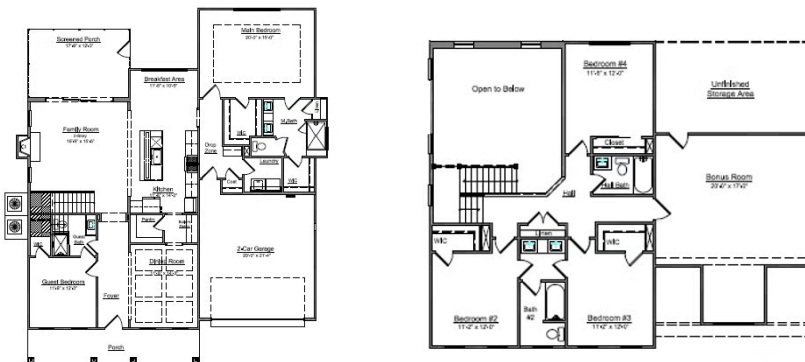
Bedrooms: **5**

Bathrooms: **4.0**

Square Feet: **3,247**

[www.niblockhomes.com](http://www.niblockhomes.com)

## For more information 704-842-9448



Document generated 05/30/2026 Prices, floor plans, square footage, features, and materials are subject to change at any time and may vary by community. List prices are for informational purposes only, are not binding, and do not create any contractual obligation(s). Home renderings are artistic representations and may not depict exact colors, materials, or features.

