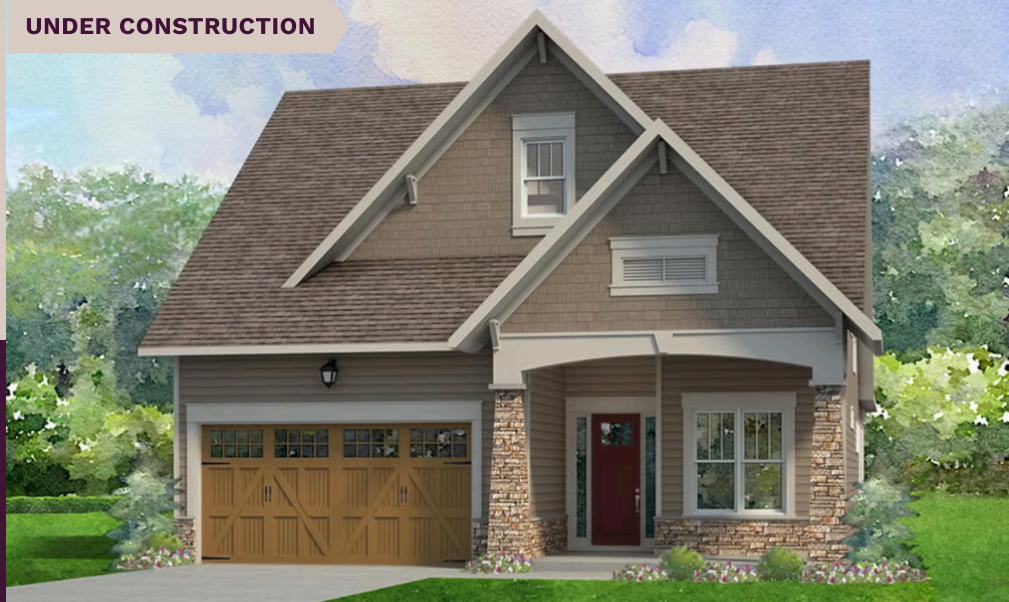


UNDER CONSTRUCTION

niblock homes

Priced At
\$660,600



Cumberland

2972 Alveston Dr NW

Concord, NC 28027

Lot 95. The Woodhaven offers relaxed, low-maintenance living in a beautifully designed layout tailored to active adults. This two-story three-bedroom home features an open-concept design that brings the kitchen, dining, and great room together—perfect for casual gatherings or quiet evenings at home. The main-level primary suite is privately positioned at the back of the home and includes a spacious bath and walk-in closet. A second bedroom at the front offers flexibility for guests, a hobby room, or a quiet office space. Upstairs, a third bedroom and loft provide even more room for visiting family or creating your ideal retreat. This home is nestled inside our Cumberland Patio Home Community, designed exclusively for active adults aged 55 plus. Here, you'll enjoy a relaxed, low-maintenance lifestyle paired with thoughtfully crafted homes and Asheville-inspired architecture. Unwind at the community clubhouse, enjoy year-round fun on the pickleball court, and let your furry companion run free at the dog park. Conveniently situated between Poplar Tent Road and Concord Parkway, residents will appreciate Cabarrus County's lower taxes, and easy access to premier medical facilities. You are just moments away from historic Downtown Concord, vibrant uptown Charlotte, and the Charlotte-Douglas International Airport, making it easy to stay close to everything you need while enjoying the peaceful surroundings of a community built just for you.

HOME FEATURES

Floor Plan: **Woodhaven**

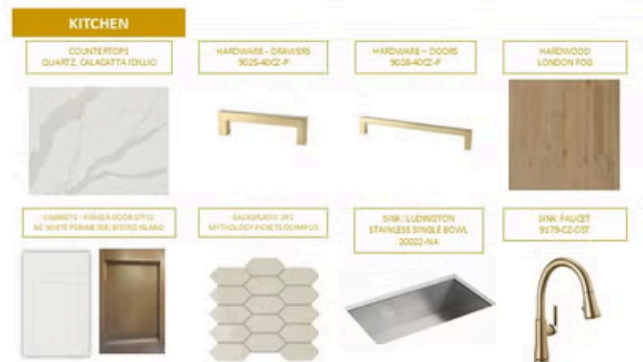
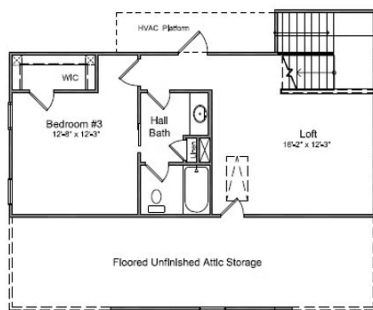
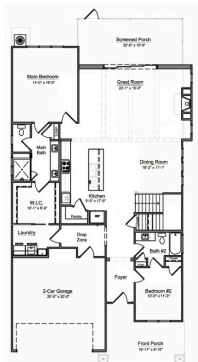
Bedrooms: **3**

Bathrooms: **3.0**

Square Feet: **2,501**

www.niblockhomes.com

For more information
704-842-9448



Document generated 05/21/2026 Prices, floor plans, square footage, features, and materials are subject to change at any time and may vary by community. List prices are for informational purposes only, are not binding, and do not create any contractual obligation(s). Home renderings are artistic representations and may not depict exact colors, materials, or features.

