

niblock homes

MOVE-IN READY



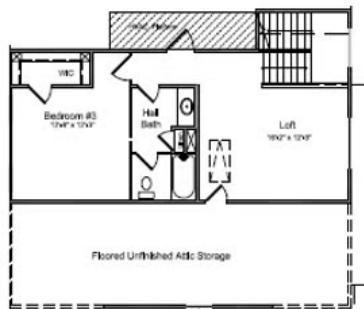
Priced At
\$729,500

Cumberland

3000 Alveston Dr NW Lot 88

Concord, NC 28027

The uniquely designed Woodhaven offers relaxed, low-maintenance living in a beautifully crafted layout tailored for active adults. This thoughtfully designed two-story, three-bedroom home blends comfort, flexibility, and timeless style. The open-concept main level features an expansive sunroom off the great room that leads to a rear patio — perfect for morning coffee or evening gatherings. Built-in bookcases flank the fireplace, creating a warm focal point that seamlessly connects the kitchen, dining area, and great room for both entertaining and quiet evenings at home. Privately positioned at the rear of the home, the main-level primary suite offers a spacious retreat complete with a garden tub, separate zero-entry shower with seat, and an oversized walk-in closet that conveniently connects to the laundry room. At the front of the home, a generously sized secondary bedroom is paired with an adjacent bath featuring a zero-entry shower, offering ease of use and thoughtful flexibility for guests or evolving lifestyle needs. The attached two-car garage is extended an additional two feet, providing extra space for storage, hobbies, or easier everyday access. Upstairs, a third bedroom, full bath, and loft/office provide additional living space — ideal for visiting family, hobbies, or creating your own private retreat. You'll also enjoy fully floored walk-out storage accessed from the loft area.



HOME FEATURES

Floor Plan: **Woodhaven**

Bedrooms: **3**

Bathrooms: **3.5**

Square Feet: **2,792**

www.niblockhomes.com

For more information
704-842-9448



Document generated 05/1/2026 Prices, floor plans, square footage, features, and materials are subject to change at any time and may vary by community. List prices are for informational purposes only, are not binding, and do not create any contractual obligation(s). Home renderings are artistic representations and may not depict exact colors, materials, or features.

