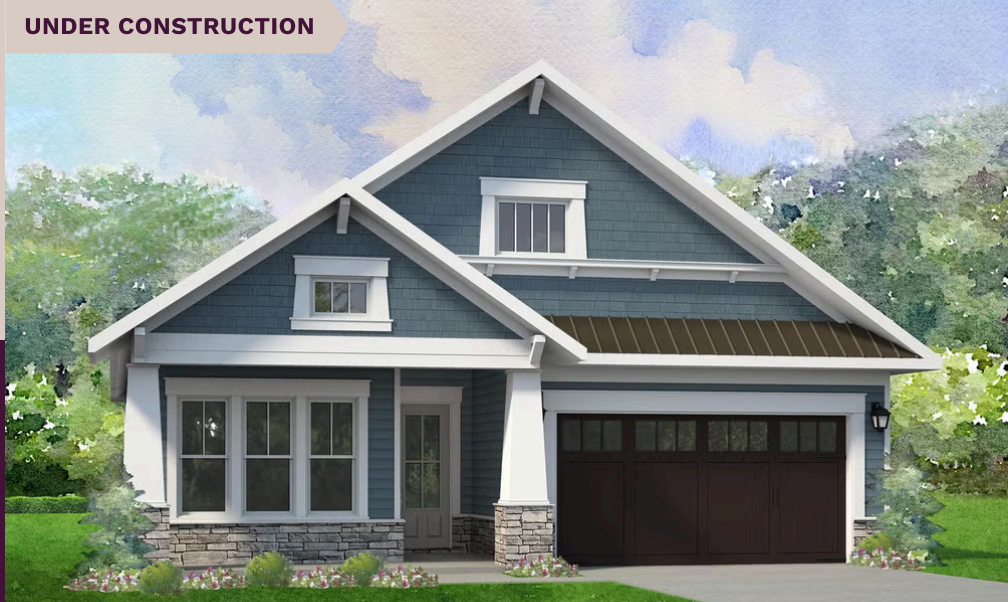


UNDER CONSTRUCTION

# niblock homes

Priced At  
**\$637,100**



## Cumberland

### 2976 Alveston Dr NW Lot 94

Concord, NC 28027

The Millbrook is a delightful and functional three-bedroom ranch with an open-concept layout that seamlessly unites the kitchen, dining room, and great room into one extended gathering space. Enjoy a large kitchen featuring abundant storage and plenty of space for meal preparation and gatherings. The main suite overlooks the patio, where fresh air and tranquil views offer a refreshing and relaxing living experience. This home is nestled inside our Cumberland Patio Home Community, designed exclusively for active adults aged 55 plus. Here, you'll enjoy a relaxed, low-maintenance lifestyle paired with thoughtfully crafted homes and Asheville-inspired architecture. Unwind at the community clubhouse, enjoy year-round fun on the pickleball court, and let your furry companion run free at the dog park. Conveniently situated between Poplar Tent Road and Concord Parkway, residents will appreciate Cabarrus County's lower taxes, and easy access to premier medical facilities. You are just moments away from historic Downtown Concord, vibrant uptown Charlotte, and the Charlotte-Douglas International Airport, making it easy to stay close to everything you need while enjoying the peaceful surroundings of a community built just for you.

## HOME FEATURES

Floor Plan: **Millbrook**

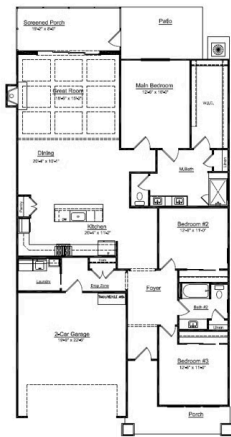
Bedrooms: **3**

Bathrooms: **2.0**

Square Feet: **2,053**

[www.niblockhomes.com](http://www.niblockhomes.com)

For more information  
**704-842-9448**



Document generated 05/1/2026 Prices, floor plans, square footage, features, and materials are subject to change at any time and may vary by community. List prices are for informational purposes only, are not binding, and do not create any contractual obligation(s). Home renderings are artistic representations and may not depict exact colors, materials, or features.

