

UNDER CONSTRUCTION

niblock homes

Price
Coming soon

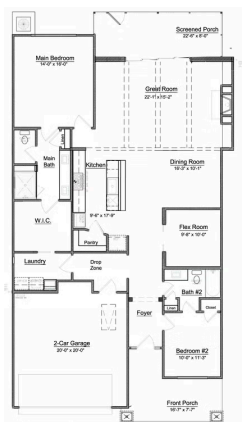


Cumberland

2968 Alveston Dr NW Lot 96

Concord, NC 28027

The Crestwood offers just the right amount of space – prioritizing comfort and functionality. The main suite is tucked privately at the rear, while a guest room at the front of the home provides ideal separation for visitors. The flex room is the perfect space for a home office or craft room, and the laundry room is conveniently located next to the primary closet, making daily routines even easier. And when it's time to unwind, the expansive screened porch is the ideal spot to enjoy your morning coffee. This home is nestled inside our Cumberland Patio Home Community, designed exclusively for active adults aged 55 plus. Here, you'll enjoy a relaxed, low-maintenance lifestyle paired with thoughtfully crafted homes and Asheville-inspired architecture. Unwind at the community clubhouse, enjoy year-round fun on the pickleball court, and let your furry companion run free at the dog park. Conveniently situated between Poplar Tent Road and Concord Parkway, residents will appreciate Cabarrus County's lower taxes, and easy access to premier medical facilities. You are just moments away from historic Downtown Concord, vibrant uptown Charlotte, and the Charlotte-Douglas International Airport, making it easy to stay close to everything you need while enjoying the peaceful surroundings of a community built just for you.



HOME FEATURES

Floor Plan: **Crestwood**

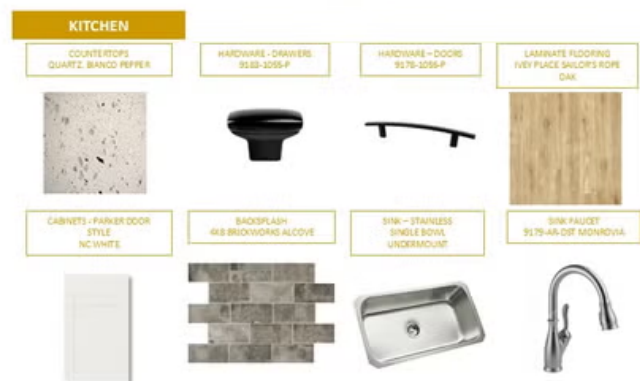
Bedrooms: **2**

Bathrooms: **2.0**

Square Feet: **1,816**

www.niblockhomes.com

For more information
704-842-9448



Document generated 08/26/2025 Prices, floor plans, square footage, features, and materials are subject to change at any time and may vary by community. List prices are for informational purposes only, are not binding, and do not create any contractual obligation(s). Home renderings are artistic representations and may not depict exact colors, materials, or features.

