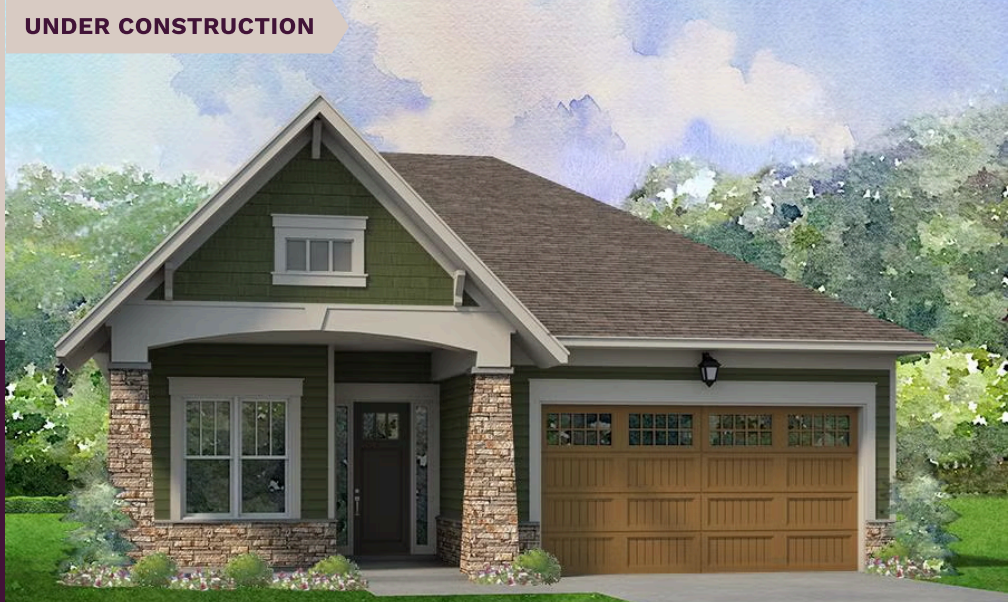


# niblock homes

Priced At  
**\$614,400**

UNDER CONSTRUCTION

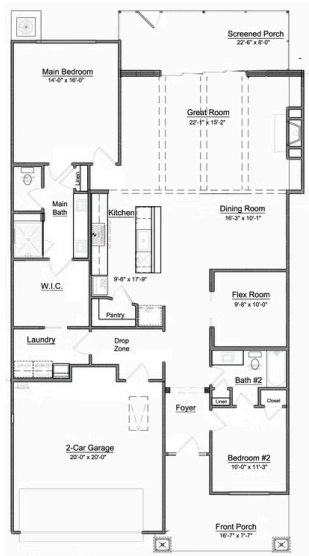


## Cumberland

**197 Fulworth Dr NW Lot 80**

Concord, NC 28027

The Crestwood offers just the right amount of space – prioritizing comfort and functionality. The main suite is tucked privately at the rear, while a guest room at the front of the home provides ideal separation for visitors. The flex room is the perfect space for a home office or craft room, and the laundry room is conveniently located next to the primary closet, making daily routines even easier. And when it's time to unwind, the expansive screened porch is the ideal spot to enjoy your morning coffee. This home is nestled inside our Cumberland Patio Home Community, designed exclusively for active adults aged 55 plus. Here, you'll enjoy a relaxed, low-maintenance lifestyle paired with thoughtfully crafted homes and Asheville-inspired architecture. Unwind at the community clubhouse, enjoy year-round fun on the pickleball court, and let your furry companion run free at the dog park.



## HOME FEATURES

Floor Plan: **Crestwood**

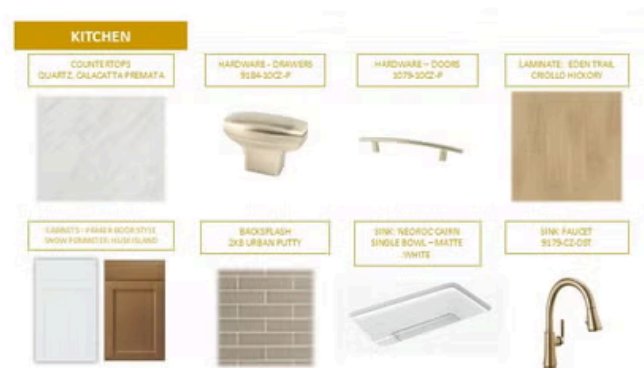
Bedrooms: **2**

Bathrooms: **2.0**

Square Feet: **1,849**

[www.niblockhomes.com](http://www.niblockhomes.com)

For more information  
**704-842-9448**



Document generated 02/24/2026 Prices, floor plans, square footage, features, and materials are subject to change at any time and may vary by community. List prices are for informational purposes only, are not binding, and do not create any contractual obligation(s). Home renderings are artistic representations and may not depict exact colors, materials, or features.

