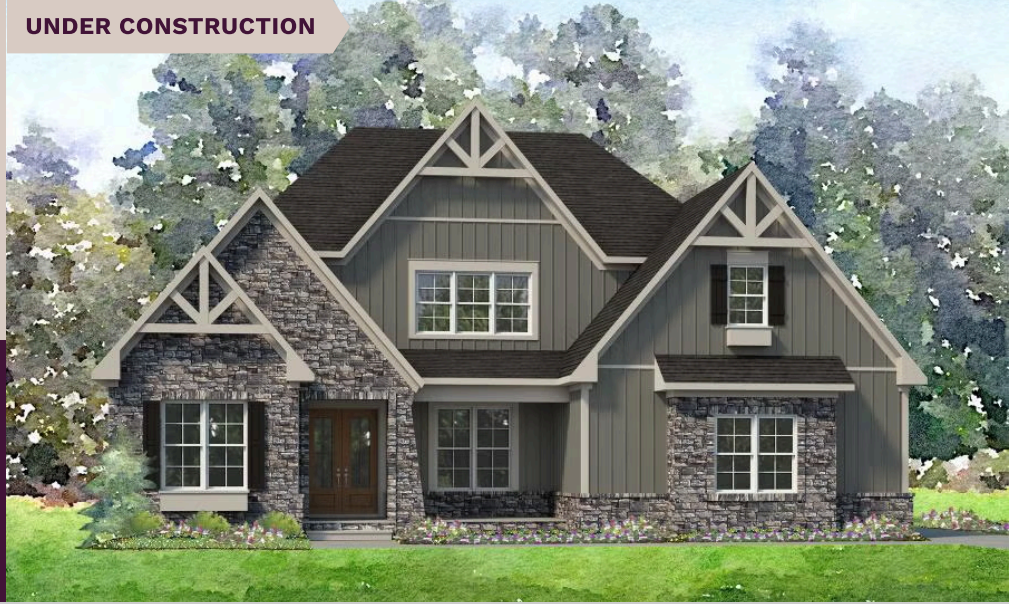


niblock homes

Priced At
\$966,897

UNDER CONSTRUCTION



Cordera

250 Colton Place NE Lot 11

Concord, NC 28025

Introducing the Bennett – a thoughtfully designed 3-bedroom home offers the perfect blend of style, space, and everyday convenience. The first-floor primary suite is a private retreat, complete with a spacious walk-in closet and a luxurious bath. The open-concept kitchen is a chef's dream, featuring an oversized pantry and plenty of prep and storage space—ideal for hosting or daily living. Upstairs, a versatile bonus room provides endless possibilities, from a playroom to a home office or media space. With two additional bedrooms and smart design throughout, this home is built for modern living and effortless flow. Ideally situated minutes from Concord's vibrant dining, shopping, and entertainment, as well as convenient access to Atrium Health Cabarrus and Charlotte, Cordera offers the perfect balance of seclusion and connectivity.

HOME FEATURES

Floor Plan: **Bennett**

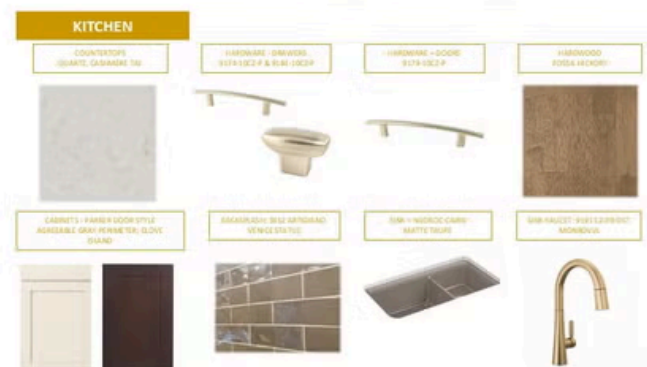
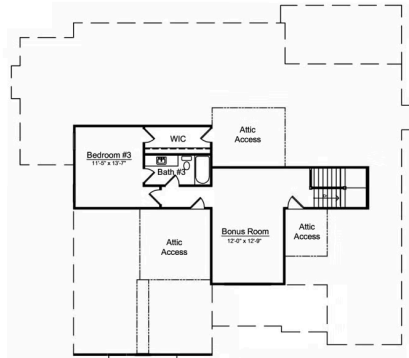
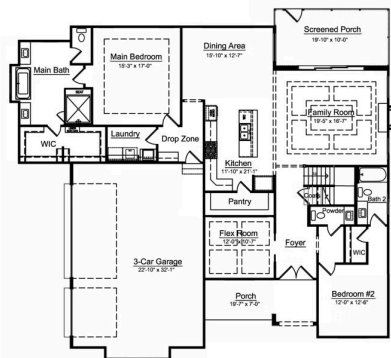
Bedrooms: **3**

Bathrooms: **3.5**

Square Feet: **2,905**

www.niblockhomes.com

For more information
704-842-9448



Document generated 02/24/2026 Prices, floor plans, square footage, features, and materials are subject to change at any time and may vary by community. List prices are for informational purposes only, are not binding, and do not create any contractual obligation(s). Home renderings are artistic representations and may not depict exact colors, materials, or features.

